

- Posts to be Southern Yellow Pine #1 Pressure treated
- Beam to be Southern Yellow Pine #1 Pressure treated
- Rafter and Rim board to be wrapped - weather protected Hem Fir #2 2x8
- No Electrical work to be done in this scope of work

Drip Edge on all Rakes and Eaves

4x4 Post on Metal Post Base Connector

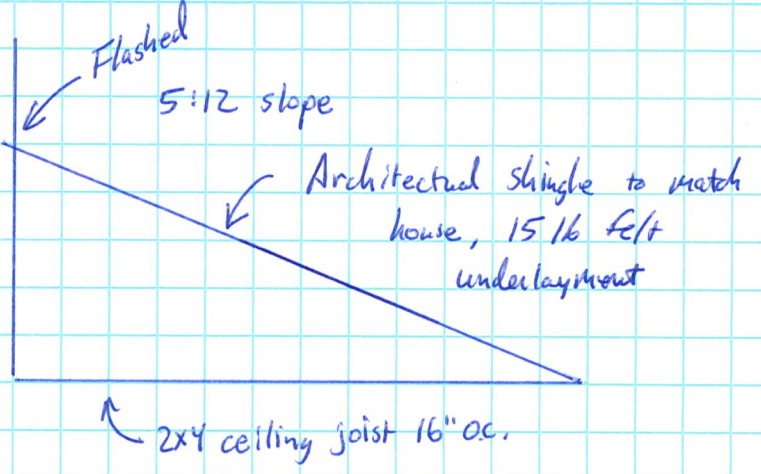
All Piers separated from slab with expansion material

Piers are 8" diameter + 30" deep

Face Nail beam 3" 10d nails Galvanized from each side in rows of 3

1' Max Cantilever

H2.5 connector beam to Rafter typical



1/4" = 1' scale

(Example Path Cover)